



FSXLive
Manual

Version 1.00

published: May 2013

Copyright: 2013 PositionGames.com

FSXLive is not to be considered in any way, implied, certified, suitable or valid for the training of any person for the operation of any real aircraft.

Inhoud

- Introduction4
- System requirements4
- Setting up your system with FSX5
- Setup.....5
- FSXFollow.exe Functions:.....10
- FSXLive11
- Map.....11

Introduction

FSXFollow.exe is a client written for FSX¹. It sends simulation data to a dedicated server. FSXLive also connects to this server and uses the data. This special approach has major advantages:

1. You can follow or control your flight even when you are not connected to the same network. For example, you can follow your flight when you are at your work, or commuting
2. You don't need to enter or think about entering ip addresses.
3. You can follow other flights from other dedicated simmers
4. You can follow your flight from any modern browser, this includes smart TV, tables, Sony Playstation Vita, tablets, Android devices, iPhone, iPad and iPod touch.

The first part of this manual covers the setup of the PC client. The second parts describes the possibilities of FSXLive.com.

System requirements

Hardware:

Windows compatible PC.

Software:

FSX with SP1 or acceleration pack, X-Plane (PC), Support for FS2004 through FSUIPC

¹ FSXFollow.exe also works with Prepar3d and ESP.

Setting up your system with FSX

Setup

Step by step instructions to follow your own flights:

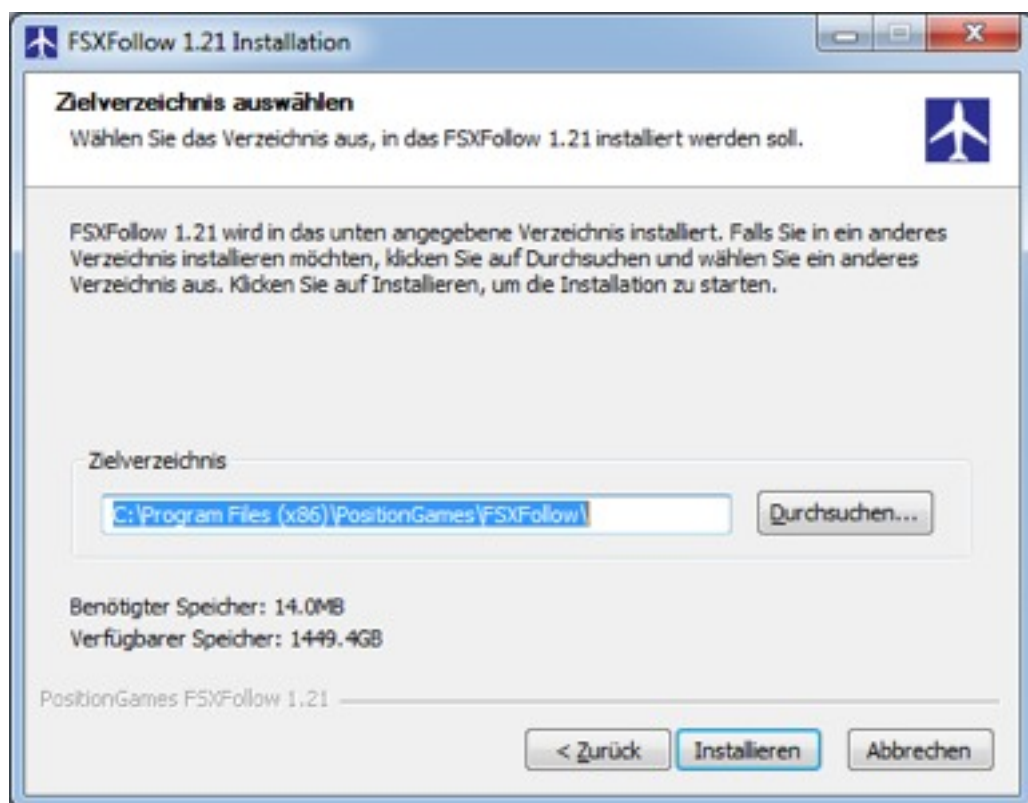
Make sure you have installed the service pack for FSX. Caution: If you have FSX Acceleration pack installed, you should not install the service packs.

<http://www.microsoft.com/Products/Games/FSInsider/downloads/Pages/default.aspx>

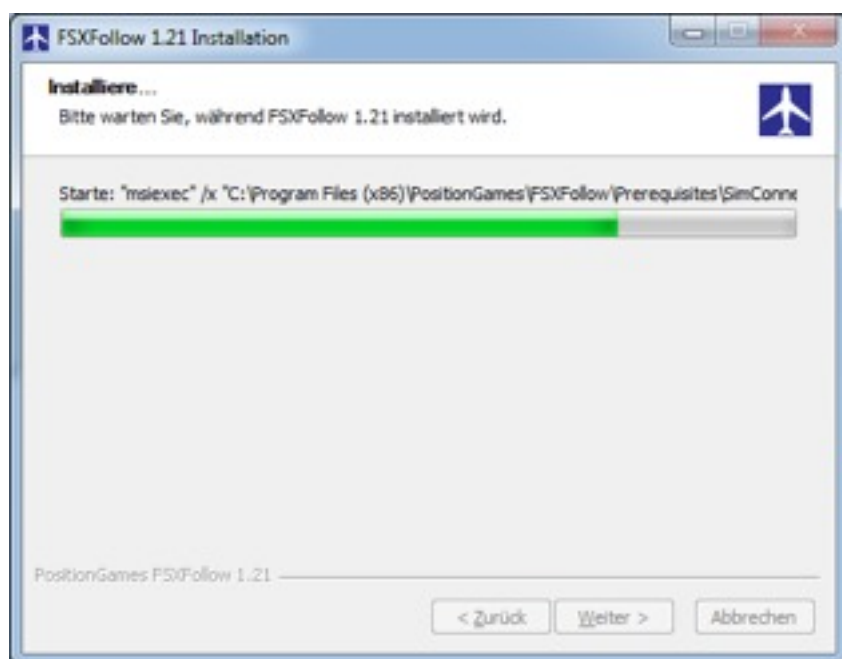
Download and extract [FSXFollow.zip](#) (about 7.0 MB) and start fsxfollow.exe to install).

Make sure you use always the latest version. Currenty version 1.5

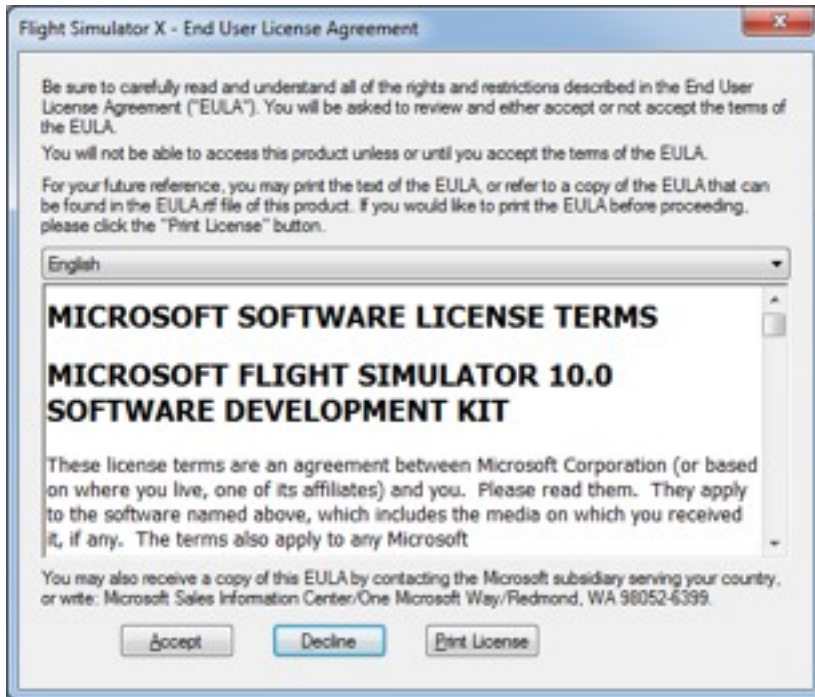




Click on Next to install it in the designated directory.



The installer should start to copy files.

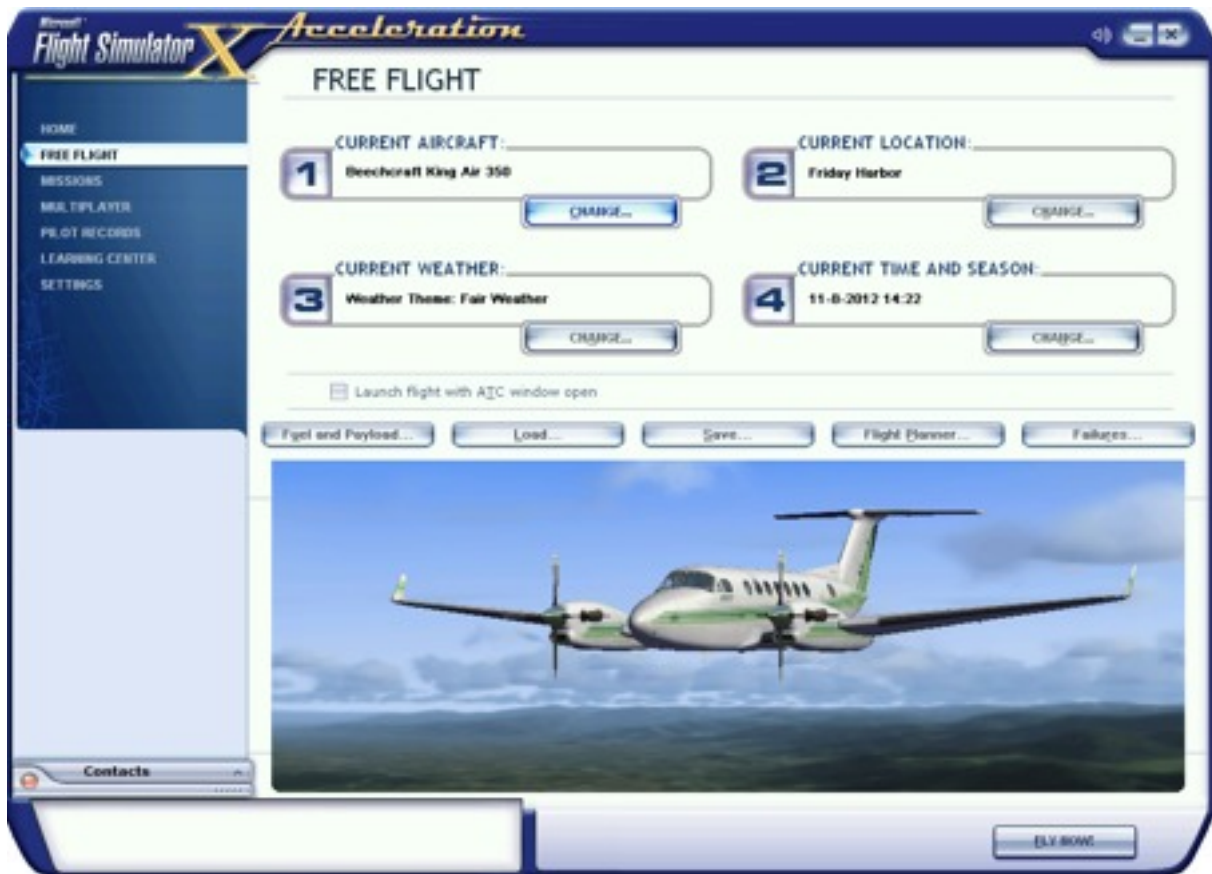


The latest version of SimConnect is installed



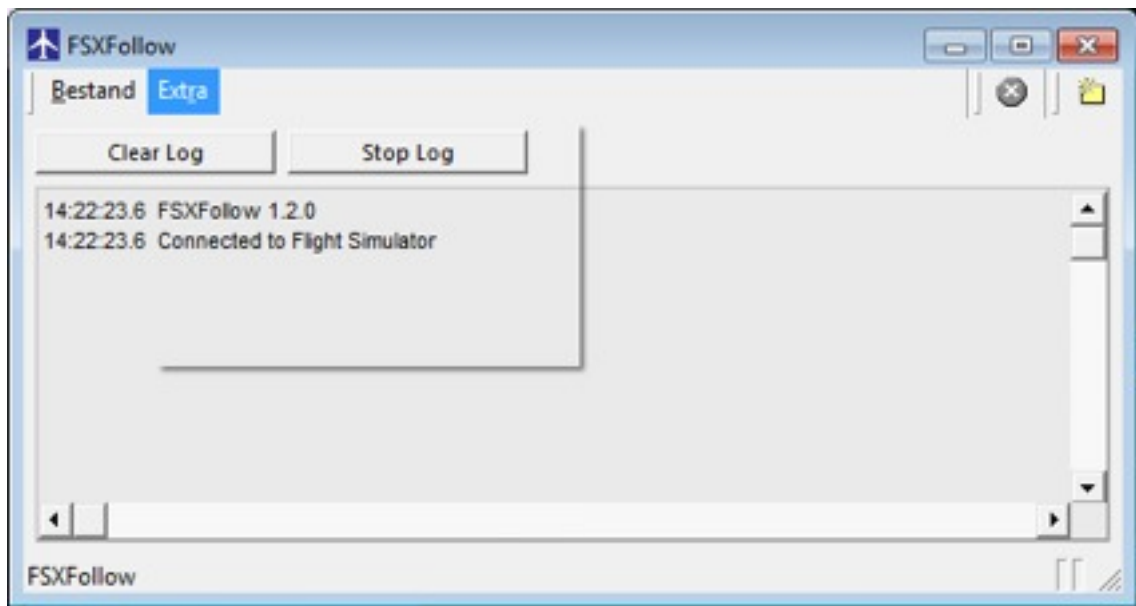
Click on Next to Finish the installation. If FSXFollow starts, then close it for now by choosing File, Exit from the menu.

Start FSX

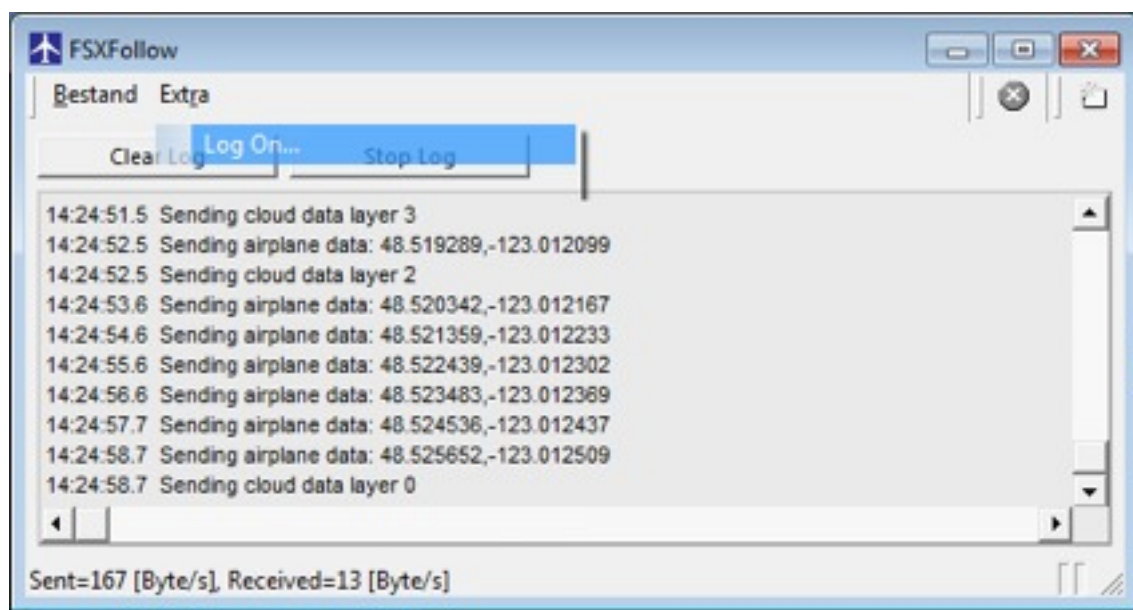


You can choose a mission or free flight.

Start FSXFollow, through the desktop or through Start, Program File, PositionGames, FSXFollow.



The program should say it is connected to Flight Simulator.



From the Menu, choose Logon, FSXFollow.exe should now start to send data to the central server.

FSXFollow.exe Functions:

Session Name

You can set the name of your flight. It is common to enter the airport codes of your departure and destination airports.

Password

Some Apps enable you to control your flight or make changes to FSX. Since you want to make sure you are the only one who can change your flight, you can enter your password here. If this password matches the password in the app, you can make changes. Apps that use a password are: FSXControl, FSXSlew and FSXAeroCache.

Allow Screenshot to be send

The FSXFollow and FSXSlew app are able to retrieve the screen of the FSX program. Sometimes others enjoy watching your flight and would like to take a look into your cockpit. If you don't want this, you can disable the possibility to send your screen.

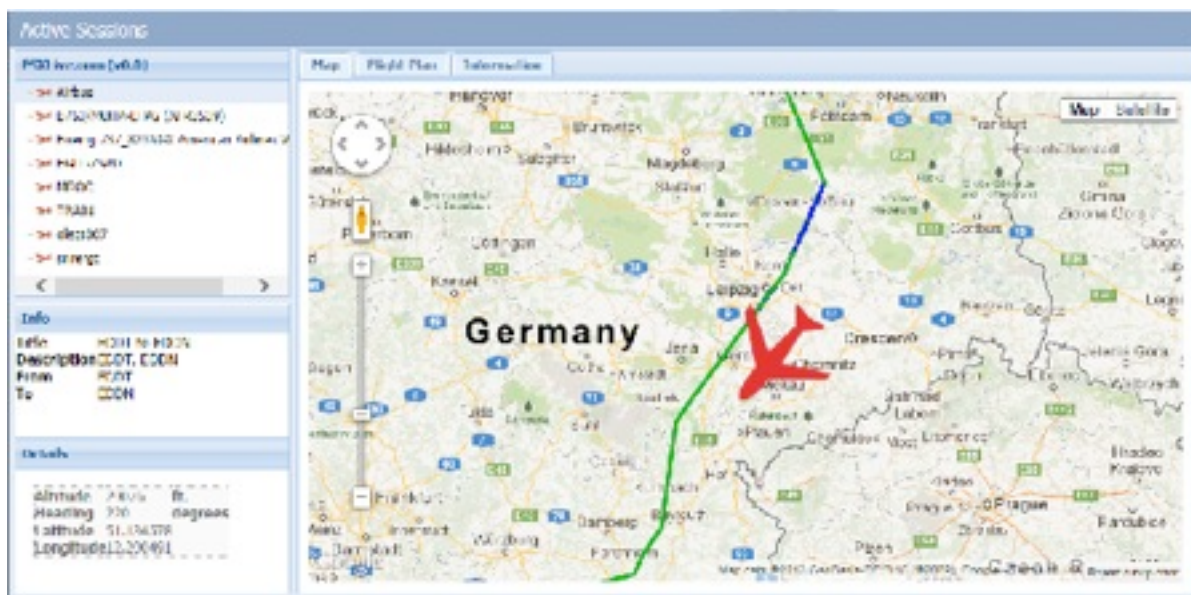
Change FSX Live Credentials

When you purchase a key, there is no time limit of following your plane. Enter your e-mail address and your key. You can obtain a key by going to the fsxlive.com website.

FSXLive

Start FSXFollow.com and choose Log on from the menu.

You can enter a session name so you can identify your own plane easily.



Start your browser and go to www.fsxlive.com

You will see a list of sessions after starting the app. You can either follow your own session or follow the flight of somebody else.

When you click on a flight, the map is shown. After a few seconds it shows the location of the plane. The altitude and heading of the plane is also indicated.

Map

The map shows the route you have already flown. If there is a flight plan, the flight plan is shown on the map as well.

If you see a plane located in the middle of the Atlantic ocean (latitude and longitude are both 0), this means the user hasn't registered his version of FSXFollow.exe.

A unregistered version will work for the first 5 minutes after starting FSXFollow.exe

Flight plan

This list all the waypoints of the current flight

The screenshot displays the 'Active Sessions' window. On the left, a tree view shows a hierarchy of sessions, including 'All Sessions', 'All Sessions (Active)', 'All Sessions (Inactive)', 'All Sessions (All)', 'All Sessions (All)', 'All Sessions (All)', 'All Sessions (All)', and 'All Sessions (All)'. Below this, a 'Details' section shows flight information: 'From: F007 to F074', 'Description: CGGT, CGGT', 'From: F007', and 'To: F00N'. The main table lists various sessions with columns for 'ID', 'Latitude', 'Longitude', 'Type', and 'Distance'. The bottom panel shows 'Altitude: 2000 ft.', 'Heading: 700 degrees', 'Latitude: 41.481867', and 'Longitude: 7.471103'.

| ID | Latitude | Longitude | Type | Distance |
|------|-----------|-----------|--------------|----------|
| 0007 | 41.481867 | 7.471103 | Signal | 0 |
| 0008 | 41.481867 | 7.471103 | Interception | 0 |
| 0009 | 41.481867 | 7.471103 | Interception | 0 |
| 0010 | 41.481867 | 7.471103 | Interception | 0 |
| 0011 | 41.481867 | 7.471103 | Interception | 0 |
| 0012 | 41.481867 | 7.471103 | Interception | 0 |
| 0013 | 41.481867 | 7.471103 | Interception | 0 |
| 0014 | 41.481867 | 7.471103 | Interception | 0 |
| 0015 | 41.481867 | 7.471103 | Interception | 0 |
| 0016 | 41.481867 | 7.471103 | Interception | 0 |
| 0017 | 41.481867 | 7.471103 | Interception | 0 |
| 0018 | 41.481867 | 7.471103 | Interception | 0 |
| 0019 | 41.481867 | 7.471103 | Interception | 0 |
| 0020 | 41.481867 | 7.471103 | Interception | 0 |
| 0021 | 41.481867 | 7.471103 | Interception | 0 |
| 0022 | 41.481867 | 7.471103 | Interception | 0 |
| 0023 | 41.481867 | 7.471103 | Interception | 0 |
| 0024 | 41.481867 | 7.471103 | Interception | 0 |
| 0025 | 41.481867 | 7.471103 | Interception | 0 |
| 0026 | 41.481867 | 7.471103 | Interception | 0 |
| 0027 | 41.481867 | 7.471103 | Interception | 0 |
| 0028 | 41.481867 | 7.471103 | Interception | 0 |
| 0029 | 41.481867 | 7.471103 | Interception | 0 |
| 0030 | 41.481867 | 7.471103 | Interception | 0 |
| 0031 | 41.481867 | 7.471103 | Interception | 0 |
| 0032 | 41.481867 | 7.471103 | Interception | 0 |
| 0033 | 41.481867 | 7.471103 | Interception | 0 |
| 0034 | 41.481867 | 7.471103 | Interception | 0 |
| 0035 | 41.481867 | 7.471103 | Interception | 0 |
| 0036 | 41.481867 | 7.471103 | Interception | 0 |
| 0037 | 41.481867 | 7.471103 | Interception | 0 |
| 0038 | 41.481867 | 7.471103 | Interception | 0 |
| 0039 | 41.481867 | 7.471103 | Interception | 0 |
| 0040 | 41.481867 | 7.471103 | Interception | 0 |
| 0041 | 41.481867 | 7.471103 | Interception | 0 |
| 0042 | 41.481867 | 7.471103 | Interception | 0 |
| 0043 | 41.481867 | 7.471103 | Interception | 0 |
| 0044 | 41.481867 | 7.471103 | Interception | 0 |
| 0045 | 41.481867 | 7.471103 | Interception | 0 |
| 0046 | 41.481867 | 7.471103 | Interception | 0 |
| 0047 | 41.481867 | 7.471103 | Interception | 0 |
| 0048 | 41.481867 | 7.471103 | Interception | 0 |
| 0049 | 41.481867 | 7.471103 | Interception | 0 |
| 0050 | 41.481867 | 7.471103 | Interception | 0 |
| 0051 | 41.481867 | 7.471103 | Interception | 0 |
| 0052 | 41.481867 | 7.471103 | Interception | 0 |
| 0053 | 41.481867 | 7.471103 | Interception | 0 |
| 0054 | 41.481867 | 7.471103 | Interception | 0 |
| 0055 | 41.481867 | 7.471103 | Interception | 0 |
| 0056 | 41.481867 | 7.471103 | Interception | 0 |
| 0057 | 41.481867 | 7.471103 | Interception | 0 |
| 0058 | 41.481867 | 7.471103 | Interception | 0 |
| 0059 | 41.481867 | 7.471103 | Interception | 0 |
| 0060 | 41.481867 | 7.471103 | Interception | 0 |
| 0061 | 41.481867 | 7.471103 | Interception | 0 |
| 0062 | 41.481867 | 7.471103 | Interception | 0 |
| 0063 | 41.481867 | 7.471103 | Interception | 0 |
| 0064 | 41.481867 | 7.471103 | Interception | 0 |
| 0065 | 41.481867 | 7.471103 | Interception | 0 |
| 0066 | 41.481867 | 7.471103 | Interception | 0 |
| 0067 | 41.481867 | 7.471103 | Interception | 0 |
| 0068 | 41.481867 | 7.471103 | Interception | 0 |
| 0069 | 41.481867 | 7.471103 | Interception | 0 |
| 0070 | 41.481867 | 7.471103 | Interception | 0 |
| 0071 | 41.481867 | 7.471103 | Interception | 0 |
| 0072 | 41.481867 | 7.471103 | Interception | 0 |
| 0073 | 41.481867 | 7.471103 | Interception | 0 |
| 0074 | 41.481867 | 7.471103 | Interception | 0 |
| 0075 | 41.481867 | 7.471103 | Interception | 0 |
| 0076 | 41.481867 | 7.471103 | Interception | 0 |
| 0077 | 41.481867 | 7.471103 | Interception | 0 |
| 0078 | 41.481867 | 7.471103 | Interception | 0 |
| 0079 | 41.481867 | 7.471103 | Interception | 0 |
| 0080 | 41.481867 | 7.471103 | Interception | 0 |
| 0081 | 41.481867 | 7.471103 | Interception | 0 |
| 0082 | 41.481867 | 7.471103 | Interception | 0 |
| 0083 | 41.481867 | 7.471103 | Interception | 0 |
| 0084 | 41.481867 | 7.471103 | Interception | 0 |
| 0085 | 41.481867 | 7.471103 | Interception | 0 |
| 0086 | 41.481867 | 7.471103 | Interception | 0 |
| 0087 | 41.481867 | 7.471103 | Interception | 0 |
| 0088 | 41.481867 | 7.471103 | Interception | 0 |
| 0089 | 41.481867 | 7.471103 | Interception | 0 |
| 0090 | 41.481867 | 7.471103 | Interception | 0 |
| 0091 | 41.481867 | 7.471103 | Interception | 0 |
| 0092 | 41.481867 | 7.471103 | Interception | 0 |
| 0093 | 41.481867 | 7.471103 | Interception | 0 |
| 0094 | 41.481867 | 7.471103 | Interception | 0 |
| 0095 | 41.481867 | 7.471103 | Interception | 0 |
| 0096 | 41.481867 | 7.471103 | Interception | 0 |
| 0097 | 41.481867 | 7.471103 | Interception | 0 |
| 0098 | 41.481867 | 7.471103 | Interception | 0 |
| 0099 | 41.481867 | 7.471103 | Interception | 0 |
| 0100 | 41.481867 | 7.471103 | Interception | 0 |

FSXLive.com is now only at its beginning. We will enhance it with more features in the near future.

Happy flying